

# Endgame-Tesuji collection

collected by Lothar

A small (by far not complete) collection of famous yose-tesuji. Some problems could be more difficult than others. Of course, yose-tesuji are closely connected with tsumego and correct reading.

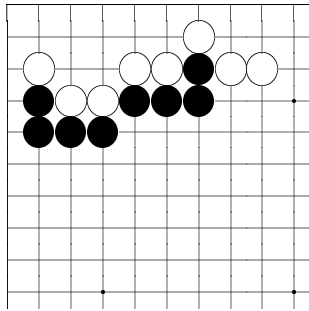


Diagram 1

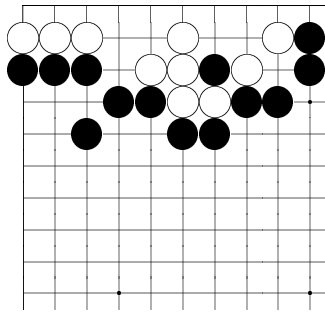


Diagram 2

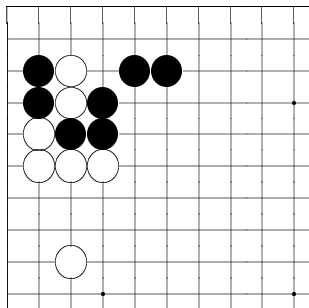


Diagram 3

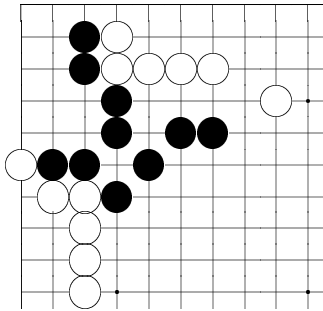


Diagram 4

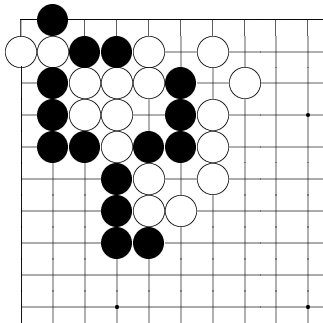


Diagram 5

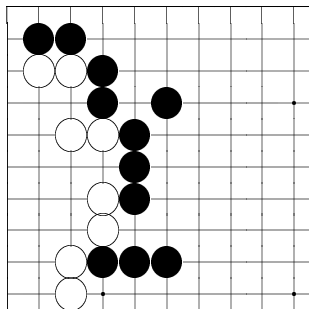


Diagram 6

If you cant find the tesuji immediately by shape, take a look at the following tsumego.

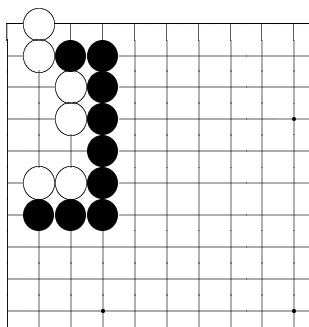


Diagram 7

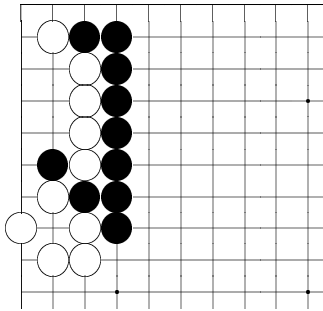


Diagram 8

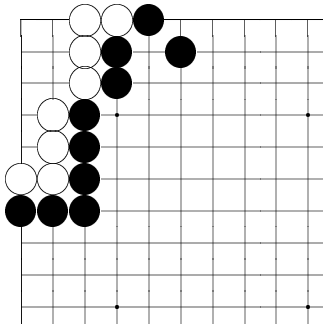


Diagram 9

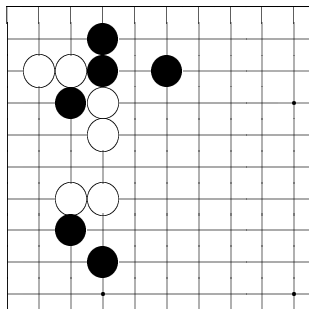


Diagram 10

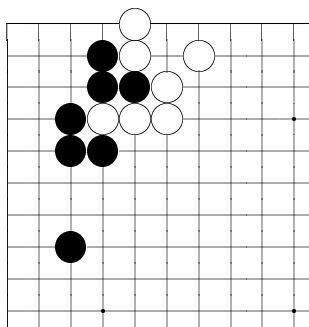
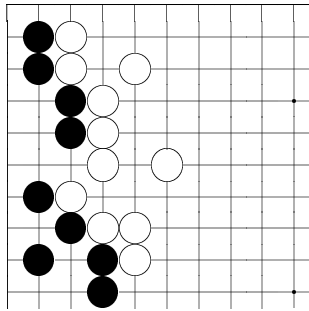
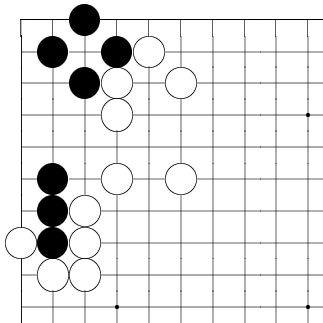


Diagram 11

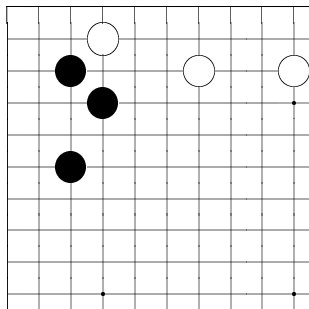


**Diagram 12**

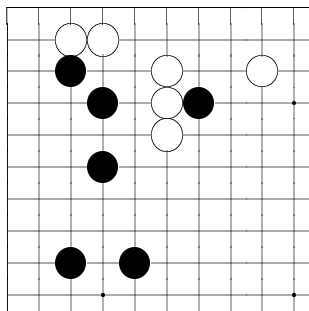


**Diagram 13**

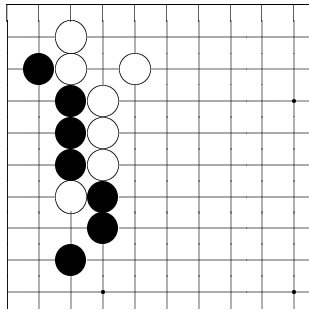
If you cant find the shape point, maybe you know the endgame in the next diagram.



**Diagram 14**

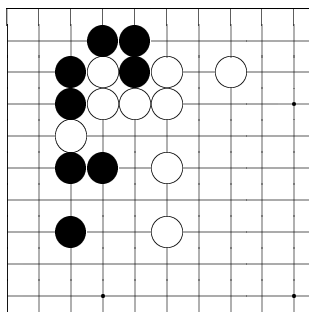


**Diagram 15**

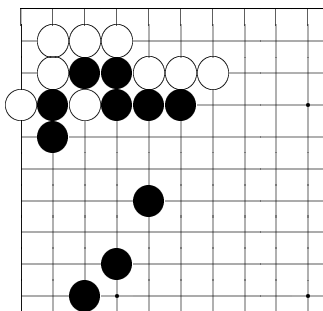


**Diagram 16**

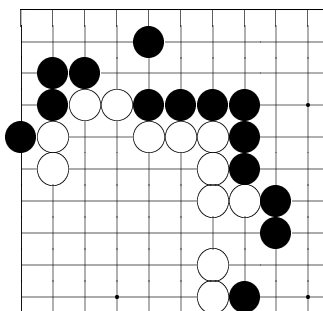
Hint: This one is connected with Diagram 12.



**Diagram 17**



**Diagram 18**



**Diagram 19**

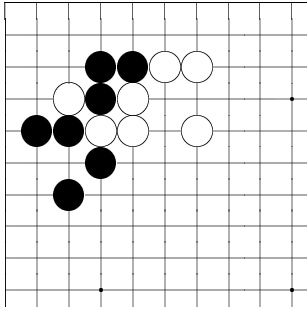


Diagram 20

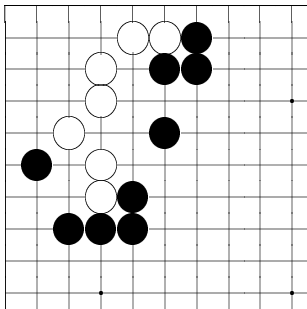


Diagram 21

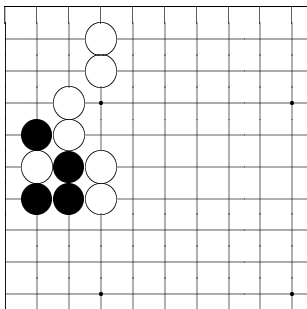


Diagram 22

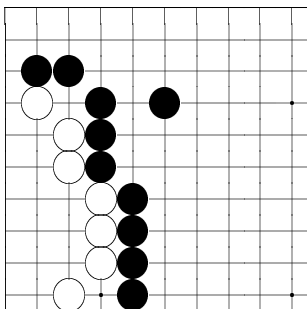


Diagram 23

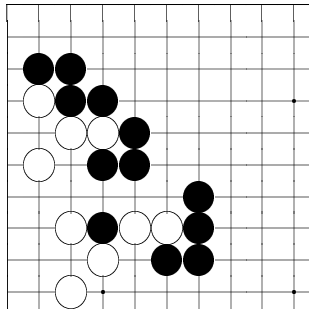


Diagram 24

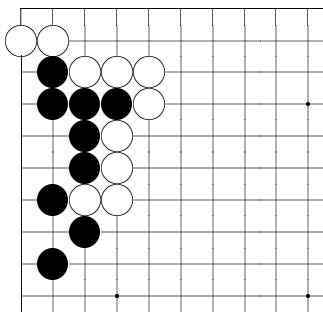


Diagram 25